

Technical Datasheet

Modular Wet Area Walkway Units

Specifications:

Height: 56cm

Width: 101cm

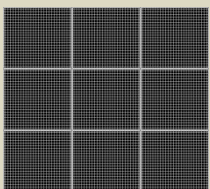
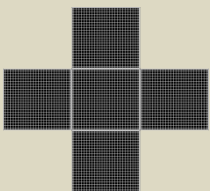
Length: 114cm

Weight: 52kg approx

Suggested for set up:
2 people

Additional information:

- 3cm x 2cm 'holes'
- Can be linked together in 4 directions, for example;



MTFX non-slip modular walkway units can be used for a variety of different purposes but are ideal for wet environments as they combine a foam mesh which minimises splash with a non-slip metal grated surface.

The modular units can be joined together to create a walkway of any length by using standard M10 bolts in the legs.

The rectangular holes in the mesh measure approx. 3cm x 2cm and therefore are not suitable for high-heeled shoes.



Fig 1. Modular walkway unit



Fig 2. Top view showing grating

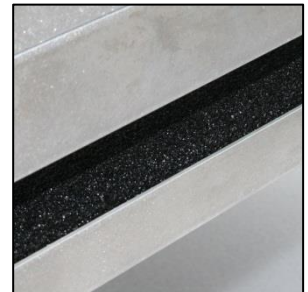


Fig 3. Close-up of anti-splash foam

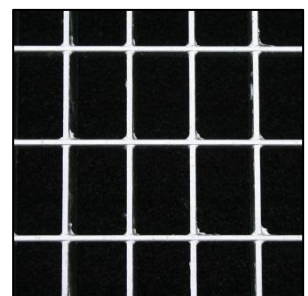
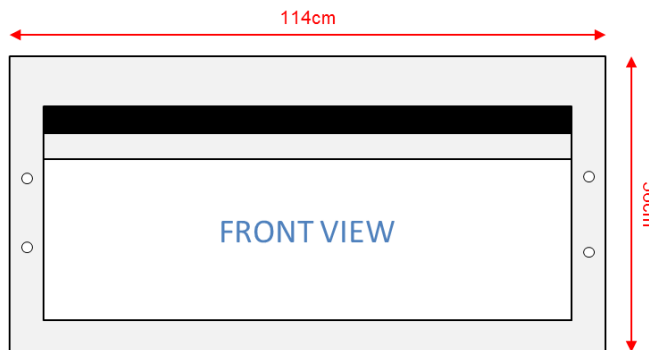


Fig 4. Close-up of grating

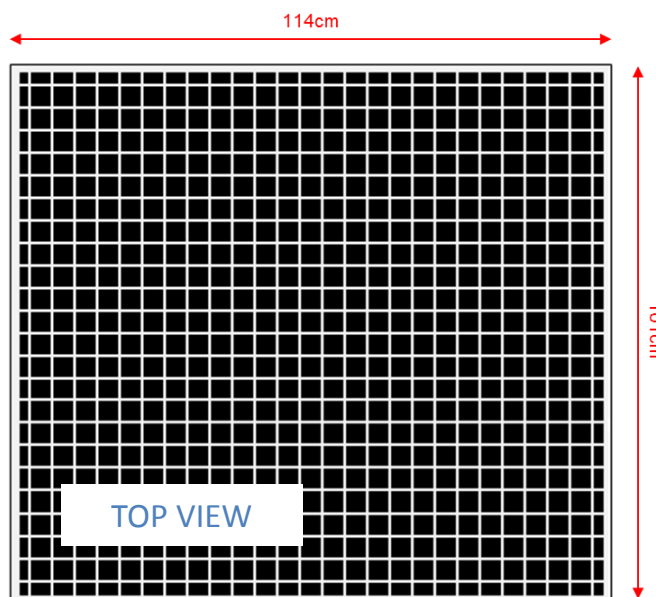


Fig 5. Connecting holes