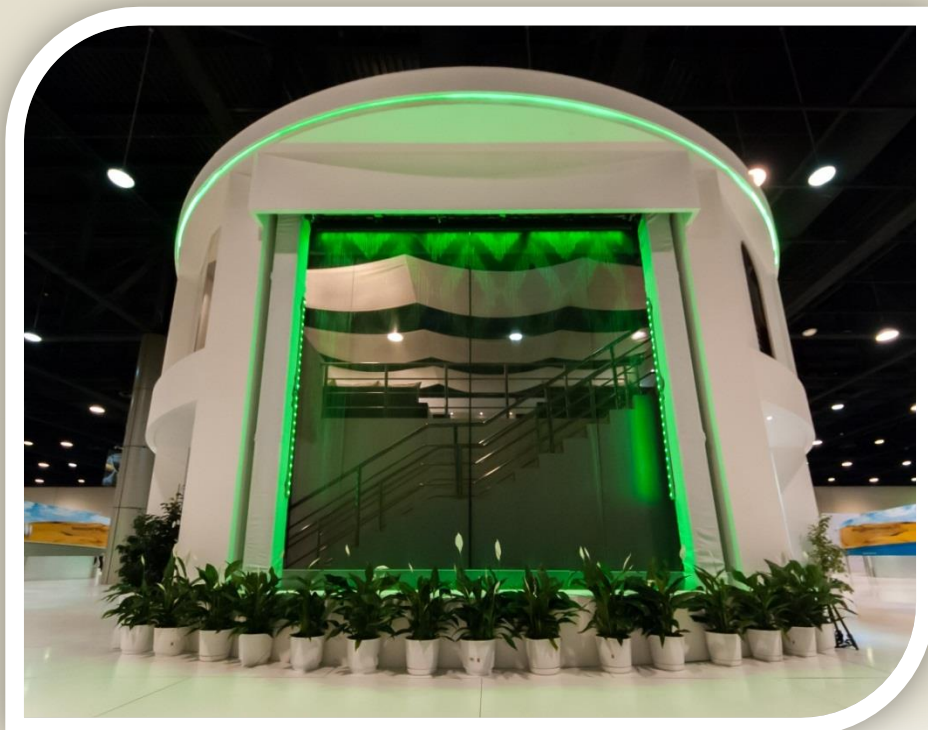


# AQUAGRAPHS

2013 Hire & Sales



# AQUAGRAPHS

HIRE & SALES BROCHURE  
2013

MTFX, Velt House, Velt House Lane, Elmore, Gloucester, United Kingdom GL2 3NY  
Tel: +44 (0)1452 729903 Fax: +44 (0) 1452 729904 Email: [info@mtfx.com](mailto:info@mtfx.com) Web: [www.mtfx.com](http://www.mtfx.com)



# WELCOME



**Aquagraphics** by MTFX is an innovative, elegant and captivating display system that creates your chosen images, words and logos in falling water. Its simplicity, beauty and sophistication make the Aquagraphics system a unique advertising tool for any event.

*Welcome to the ingenious world of*

# AQUAGRAPHS

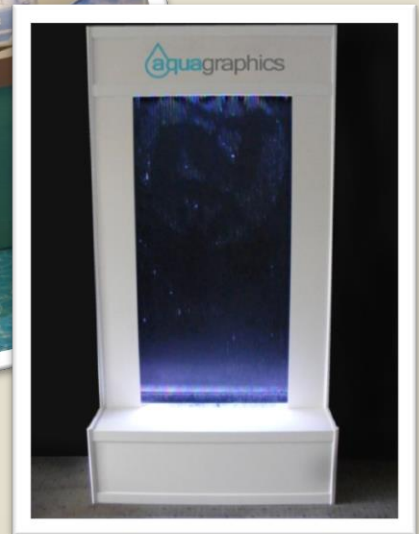


# HOW IT WORKS



Using simple tap water, unique software control and dynamic components each 76cm module can be fitted together to create longer lengths. This means your Aquagraphics display can range from 76cm (one module) to 30metres (forty two modules).

Each 76cm module can display 96 pixels created from your custom BMP file and by adding modules together the capability of display is increased by multiples of 96. The water falls into the containment trough and is filtered and pumped back around the system, creating a freestanding, self-contained display.



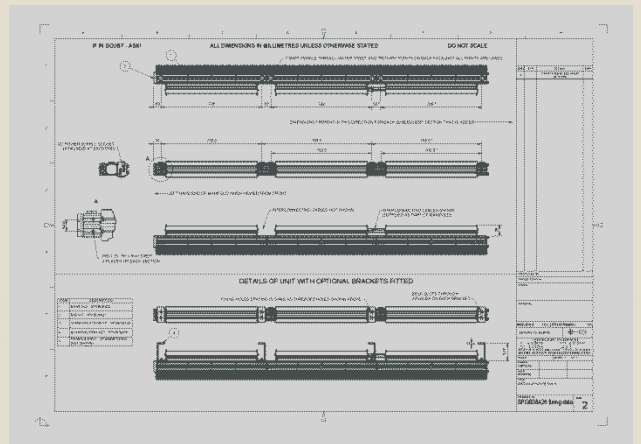


# HOW IT WORKS

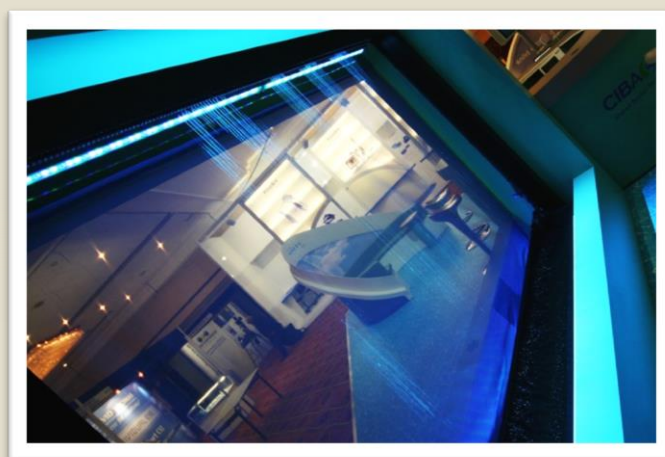
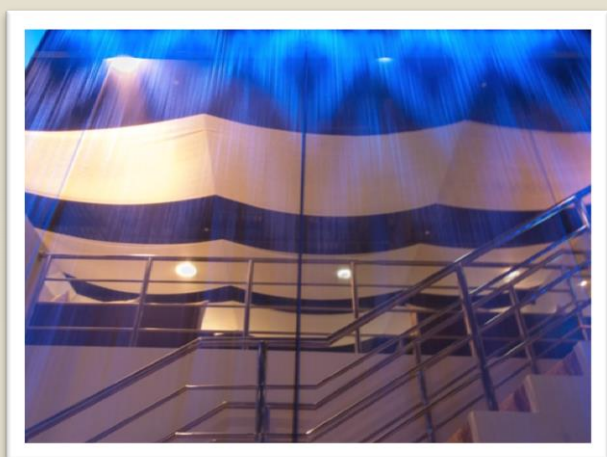
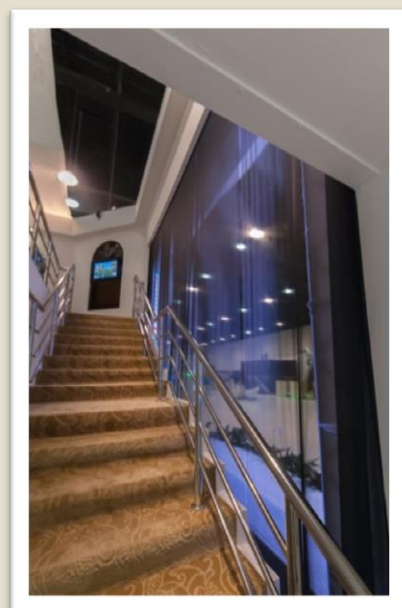
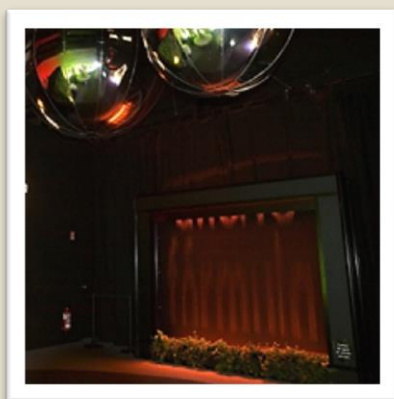


Aquagraphics screens can be created to your exact specifications, making your event or display unique to your company. The units are modular and can be priced and built to fit your ideas. They can be built into your display stand to achieve the exact effect you need.

Aquagraphics screens are available to hire or buy; and as every installation is completely bespoke we welcome any questions about setup, programming and your ideas and are more than happy to give some helpful advice and guidance. Call us on **01452 729903** to discuss your project.

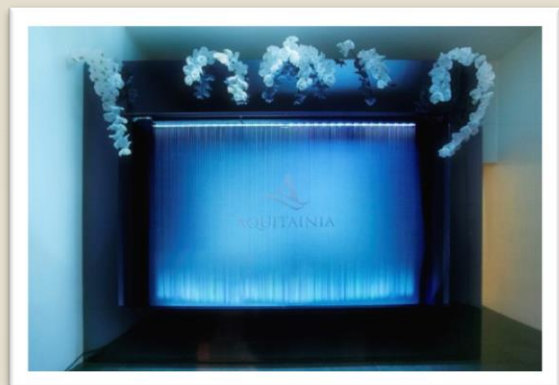
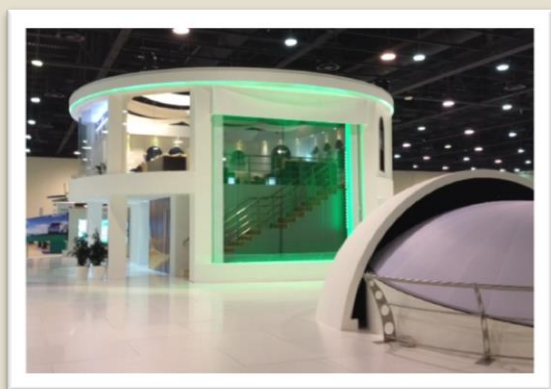


# GALLERY





# GALLERY



# BUDGET GUIDE

## Hire



Aquagraphics intelligent water display screens are available to hire for any event and can be built to the size you need. Our team of technicians will install screens into your existing event structure, or MTFX can supply elements of your display too. Please use the table below as a guide to allocating budget for your Aquagraphics screen. The price of the screen, per day, includes one technician on site for 8 hours to set up your screen.

Modules	1	2	3	4	5	6	7	8+
Screen length	76cm	152cm	228cm	304cm	380cm	456cm	532cm	Call for details
Module cost (day 1)	£1,250	£1,700	£2,550	£3,400	£4,250	£5,100	£5,950	Call for details
Additional day	£750	£950	£1,050	£1,400	£1,750	£2,100	£2,450	Call for details
Support frame	Included	Included	Included	Not included	Not included	Not included	Not included	Call for details
Optional booth per day	£500	Not available	£1,000	Not available	Not available	Not available	Not available	Call for details
Optional trough	Included	Included	Included	£1,500	£2,000	£2,500	£3,000	Call for details
Optional LED lighting	Included	Included	Included	£2,000	£3,000	£4,000	£5,000	Call for details
Suggested technicians needed	1	2	2	2	2	3	3	Call for details
Setup time (hours)	1	1.5	2	2.5	3	3.5	4	Call for details
Setup time with booth (hours)	1.5	2	3	3	4	4	5	Call for details



# BUDGET GUIDE

## Purchase



If you are looking for a permanent Aquagraphics water display screen MTFX can build a bespoke system up to 30 metres wide. When dressed to blend in with its environment an Aquagraphics screen creates a truly stunning visual spectacle. Every Aquagraphics installation is different and we will of course tailor the package to your requirements. Please use the table below as a guide to allocating budget for your Aquagraphics screen.

Modules	1	2	3	4	5	6	7	8+
Screen length	76cm	152cm	228cm	304cm	380cm	456cm	532cm	Call for details
Module cost	£8,450	£16,900	£25,350	£33,800	£42,250	£50,700	£59,150	Call for details
End Kit	£150	£150	£150	£150	£150	£150	£150	Call for details
Mounting kit	£150	£225	£300	£375	£450	£525	£600	Call for details
Comms kit	£360	£360	£360	£360	£360	£360	£360	Call for details
Power supply	£800	£800	£800	£1,600	£1,600	£1,600	£2,400	Call for details
<b>Subtotal</b>	<b>£9,910</b>	<b>£18,435</b>	<b>£26,960</b>	<b>£36,285</b>	<b>£44,810</b>	<b>£53,335</b>	<b>£62,660</b>	<b>Call for details</b>
Optional basic booth	£3,000	£3,500	£4,000	Call for details	Call for details	Call for details	Call for details	Call for details
Optional basic trough	£2,000	£2,250	£2,500	£3,000	£3,500	£4,000	£4,500	Call for details
Optional basic LED lighting	£2,000	£2,250	£2,500	£2,750	£3,000	£3,500	£4,000	Call for details
Optional pump and pipework	£400	£600	£800	£1,000	£1,200	£1,500	£1,700	Call for details
Optional filtration and UV	£1,000	£1,500	£2,500	£3,000	£3,000	£4,000	£4,000	Call for details



# BUDGET GUIDE

## Installation Guidance



**There are some basic suggestions that we make to get the best from your installation.**

We recommend a dark matt background; the background shouldn't be fussy or busy. A plain black drape is ideal.

The Aquagraphics screen should ideally be backlit. The best effect is achieved by having more light behind the Aquagraphics screen.

The screen looks better when it is lit evenly. Spotlights should be avoided unless a flood of light can be achieved.

Have at least 500mm behind the Aquagraphics screen (between the waterfall and the backdrop). This is to allow room for adequate lighting and to give sufficient clearance between the screen and backdrop to avoid it getting wet from spray.

As the height of the Aquagraphics screen increases the width and length of the trough should be increased to catch the falling water. This will help reduce any overspray. On a 4 metre drop with a 4 module screen, the trough should be roughly 600mm wide by 4 metres long.

We will require a movable scaffold pole to allow us to hang the Aquagraphics head units. The scaffold pole is to be suspended below the trussing.

All light sources should be hidden to avoid strong glare as viewers look at the screen. We normally light from the top and bottom depending on available space.

When the Aquagraphics head units are in place, access is required at all times for maintenance. Please use a simple removable flashing/ fascia to hide the head units and lighting or leave adequate room for our technician to access all parts of the head units.

To achieve the best effect we recommend enclosing the screen in an alcove. This will allow the space at the back of the screen to be as dark as possible, whilst allowing the front of the Aquagraphics display to be designed and styled to your needs.

We recommend a visit to our demonstration area with your set designers and head carpenter or builder to view how the Aquagraphics screen is installed into a booth design.

Please allow room behind the screen, no further than 2 metres away, for the filtration system.

Please allow room for the hose and cables to go up to the head units and room for hosing to and from the trough.

We recommend a simple trough built using a box construction with an aquatic liner. This is easy to install and flexible to suit your set design.

The trough does not need to be deep. Its purpose is to capture the falling water to allow our pump to recycle via the filtration system. The water should be deep enough to cover the majority of our pump. (A depth of 200mm is plenty).

# SHOP



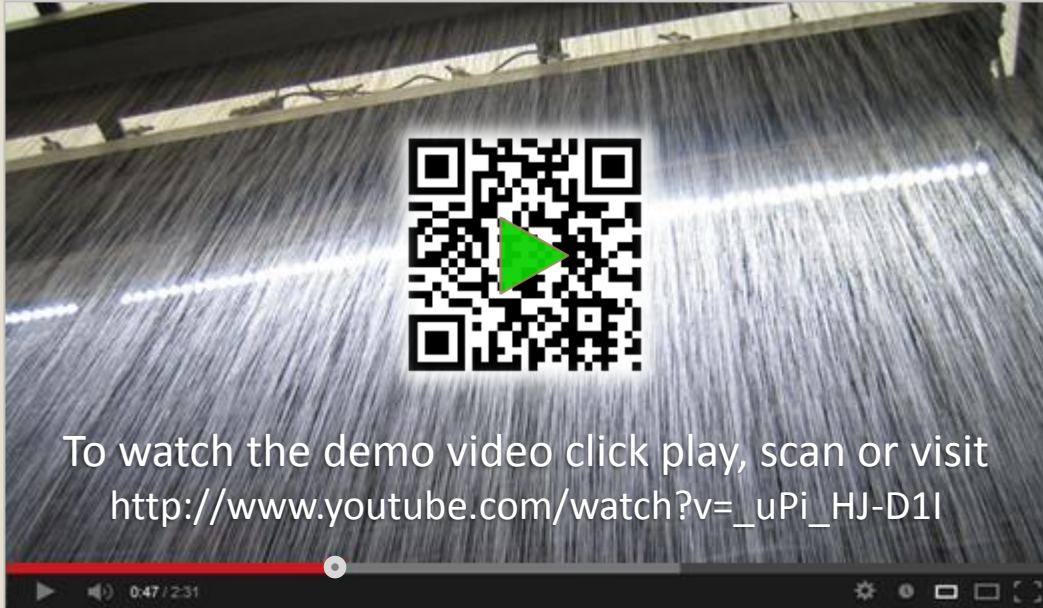
From complete module heads to replacement parts and small spares, a range of Aquagraphics equipment is now available to buy online at the MTFX shop;

[www.mtfx.com/shop](http://www.mtfx.com/shop)





# FURTHER INFO



For more information, photos and videos please visit  
<http://www.mtfx.com/aquagraphics>

