



Technical Datasheet

MTFX Dry Ice Machine

The MTFX Dry Ice Machine produces a large volume of low-hanging, dense white fog which is ideal for a range of stage, TV and film effects.

How to set up and use the MTFX Dry Ice Machine

1. Ensure the yellow drain valve (fig.2) is closed (upward position)
2. Connect 1 or 2 suitable hoses (not included as standard) to the fog outputs (fig.3) and position hoses as required.
3. Fill the machine with water (fig.4) to the level indicated in the fill window (fig.5).
4. Check all RCDs are off.
5. Plug in the power supply to the 'Mains 1' socket (fig.6).
6. Turn on 'Main 1' RCD, 'Heat 1', 'Heat 2' and 'Fan' (fig.7).
7. Switch on the fan using the red switch and set the dial to minimum (fig.8).
8. Leave one hose slightly open (fig.9) to vent steam.
9. Wait for the water temperature to reach 60°C (fig.10).
10. Just before the cue add dry ice to the tray (fig.11).
11. On the cue, turn on the pump, open the hose valve fully and increase the fan speed.
12. After use, drain the water tank by opening the yellow drain valve (fig.2).

Hints / Tips / Safety

- Heating of the water can be speeded up by attaching a second 32A power supply to the 'Mains 2' socket. Switch on the 'Mains 2' RCD and 'Heat 3' and 'Heat 4' switches (fig.12) to activate the additional heating elements.
- Ensure the area in which the effect is to be produced is adequately ventilated.
- Dry ice can cause 'cold burns' if handled incorrectly; always wear suitable protective gloves, goggles and clothing to avoid injury.
- The water inside the tank will be hot. Allow suitable cooling time before draining and be aware of steam.



Fig 1. MTFX Dry Ice Machine

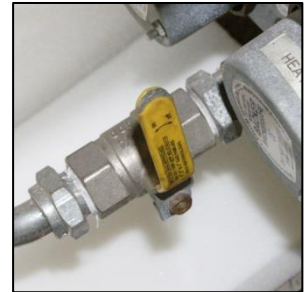


Fig 2. Drain valve



Fig 3. Fog outputs



Fig 4. Filling water



Fig 5. Fill level indicator

Specifications:

Length: 114cm

Height: 117cm

Width: 60cm

Weight: 142kg

Noise: 72db at 3mtrs

Power connector: 32A single-phase

Voltage: 240V

Peak amps: 28A if only primary heater is used, 53A if secondary is also used

Suggested for set up: 1 or 2 persons

Duration of effect: Dependent on dry ice supplies

Additional information: Water supply, hoses and dry ice required. Use dry ice slices (for slower effect) or pellets (for quicker, bigger effect).



Fig 6. Mains sockets



Fig 7. Primary control switches



Fig 8. Fan switch and speed dial



Fig 9. Fog valve partially open

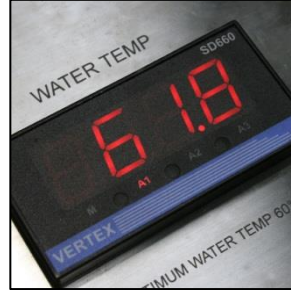


Fig 10. Temperature monitor



Fig 11. Dry ice tray

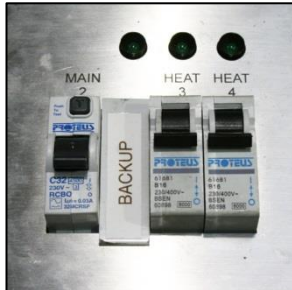


Fig 12. Secondary heater controls



Fig 13. Fog valve fully closed



Fig 14. Fog valve fully open



Fig 15. Drainage pipe