

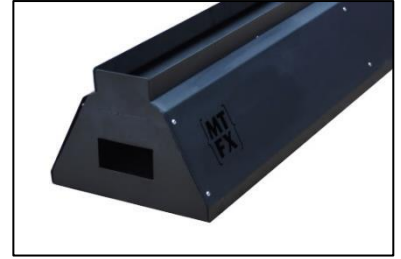


# Technical Datasheet

## 2mtr Flame Bar

The MTFX Flame Bar produces a real flame effect 2 metres long with a variable height of up to approx. 2 metres.

The Flame Bar is currently unavailable for dry-hire and can only be hired along with an MTFX Technician to operate it. Please contact us for prices and further info.



### Specifications:

Length: 200cm

Height: 23cm

Width: 29cm

Weight: 57.5kg

Shipping weight: tbc

Packaging type: tbc

Noise: 50db at 3mtrs

Voltage: 240v

Power connector:  
White/blue powercon

Suggested for set up:  
2 people

Duration of effect:  
dependent on gas supply

Additional information:  
Up to 10 units can be  
daisy-chained together.  
MTFX operator required



### How to use a Flame Bar

1. Using at least 2 people, carefully lift the Flame Bar out of its case and place on an even, flat surface.
2. Connect the power supply to a suitable control unit.
3. Connect the control unit to the power source.
4. Connect the Flame Bar to the gas supply and turn on the gas.
5. Ensuring a safe area, use the controller to ignite the gas and begin the effect.
6. To change the height of the flames adjust the regulator on the gas supply.
7. To end the effect, turn off the gas supply and wait for flames to extinguish.
8. Flames bars can be daisy-chained together using white powercon cables
9. The unit will remain hot for up to 10 minutes after use.



Fig 1. Power and gas connections



Fig 2. Gas regulator



Fig 4. The effect



Fig 3. The effect

[vimeo.com/70544553](https://vimeo.com/70544553)

