



Technical Datasheet

Large Master Blaster

The Small Master Blaster is the middle of 3. It is a CO₂ powered confetti blower that fires up to 20m.

Specifications:

Equipment Size:
160 x 135 x 38cm

Equipment Weight: 38kg

Shipping Type: Self
contained flight case

Shipping Size:
122 x 66 x 38cm

Shipping Weight: 47kg

Noise: 95db at 3m

Additional requirements:
Confetti, 2x34kg CO₂
liquid, offtake cylinders
(C40LK) Cylinder
connection thread: RH
0.860 in x 14 TPI male

Suggested for set up:
1 person

Duration of effect:
60 to 120 seconds
Approx. height of effect:
20 metres

Notes:
Suggested quantity of
Confetti: 5kgs.

How to set up and use the Large Master Blaster

1. Position the machine on level ground and secure the brakes.
2. Lift the horn from inside the flight case and secure it to the main body using the bars (fig.2) and lock pins (fig.3), then set to the required firing angle.
3. Ensure the ball valve handle on the hose is in the 'closed' position (fig.6).
4. Attach the hose to the CO₂ bottle, remembering to use the washer provided for the connection. The washers will be attached to the reverse side of the filling hopper with adhesive tape.
5. Secure the bottles to a strong fixture using a load strap or rope to stop them falling over during the effect.
6. Briefly turn 'on' and 'off' the CO₂ bottle to check for leaks at the bottle connection.
7. Place a small quantity (a few handfuls) of confetti in the hopper of the machine.
8. No more than 5 seconds before the event cue, turn the CO₂ bottles 'on'
9. On the cue open the ball valve (fig.5) and steadily feed confetti into the hopper (fig.4). Be aware that the machine may push backwards when in use.
10. Once the cue has finished immediately turn the ball valve to the 'closed' position (fig.6).
11. Turn off the CO₂ bottles.



Fig 1. Master Blaster Setup



Fig 2. Horn Bar

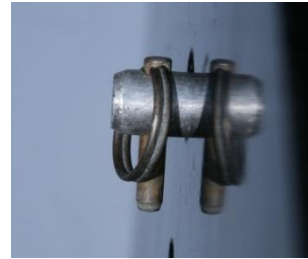


Fig 3. Locking Pin



Fig 4. Loading Hopper



Fig 5. Valve Open



Technical Datasheet

Large Master Blaster

Specifications:

Equipment Size:
160 x 135 x 38cm

Equipment Weight: 38kg

Shipping Type: Self
contained flight case

Shipping Size:
122 x 66 x 38cm

Shipping Weight: 47kg

Noise: 95db at 3m

Additional requirements:
Confetti, 2x34kg CO₂
liquid, offtake cylinders
(C40LK) Cylinder
connection thread: RH
0.860 in x 14 TPI male

Suggested for set up:
1 person

Duration of effect:
60 to 120 seconds
Approx. height of effect:
20 metres

Notes:
Suggested quantity of
Confetti: 5kgs.

12. Before attempting to disconnect the hoses, depressurise the system by ensuring the CO₂ bottles are turned off then slowly open the ball valve to release pressure left in the hose.
13. Disconnect the hose from the bottles, ensure all the washers are removed and stuck to the adhesive tape.
14. **Do not disconnect the hoses from the horn.**
15. Remove the pin and bar that locks the horn in place, put the pin back into the bar and place the bar and horn back into the case. Store the hose in the hopper ready for transportation.



Fig 6. Valve Closed

Hints/Tips/Safety:

Wear gloves when handling frosted metal; CO₂ can burn when not handled correctly.

A white plume of gas is normal; it means the machine is working correctly.

Noise is created by the CO₂ venting through the hose; this is normal.

Ensure nothing loose is nearby; anything that gets sucked into the back of the machine will come out at high speed. Be aware of wind direction and allow plenty of space when operating.

The machine is supplied with two bottle connections as standard; if required they can be modified to use on one connection, however this will shorten the duration of the effect.

For maximum effect we advise that four 34 kilo liquid withdrawal bottles are used.

Place the confetti in a box rather than a bag for easier loading when the machine is turned on.

Prolonged use of CO₂ carries an inherent risk of asphyxiation