



Technical Datasheet

Mr Mister

Specifications:

Mr Mister Size:
30 x 29 x 33cm

Mr Pressure Size:
35 x 28 x 43cm

Shipping size:
Case 1: 30 x 29 x 33cm
Case 2: 35 x 28 x 43cm

Equipment weight: 12kg

Shipping weight: 30kg

Voltage: 230V

Decibels at 3m:
Mr Mister – 50db
Mr Pressure – 62db

Peak amps drawn:
Mr Pressure – 2.2amps

Power connector:
13A IEC

Additional requirements:
- Hose between units
- Fog fluid

Suggested for set up:
1 person

Duration of effect:
8 hours per filling

The Mr Mister will produce an even haze in any large venue. Ideal for the smoky pub or disco atmosphere.

How to set up and use a Mr Mister & Mr Pressure

1. Place the machines where they are dry, vibration and shock free.
2. Only use Smoke Factory Mr Mister oil.
3. Remove the orange transport plug (fig.2).
4. Check fluid level by tilting the Mr Mister case (fig.3) backwards and forwards gently, if fluid cannot be seen in the bottom of the upper eyeglass (fig.4) take the funnel, place it into the hole at the top of the diffuser (fig.2) Pour fluid into the funnel **slowly** until you can see fluid reach the bottom of the **upper** eyeglass (fig.4). **DO NOT OVERFILL.**
5. The unit should never be operated if fluid cannot be seen in the bottom of the upper eyeglass. Top up as necessary.
6. Connect the Mr Mister to the Mr Pressure (fig.5) with the air hose provided **before** connecting the power lead.
7. If there is more than 4cm of water in the condensation glass (fig.6) remove the water by putting a small cup under the condensation glass and slowly unscrew the thumbscrew for water discharge. Close the screw after removing the condensation water.
8. To operate, turn on. After a few seconds the unit should produce a very fine haze from the hole in the top of the diffusion chamber (fig.7).

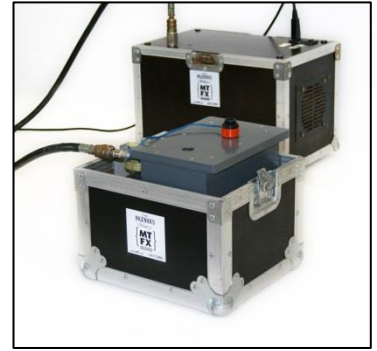


Fig 1. Mr Mister & Mr Pressure



Fig 2. Transport plug and haze hole



Fig 3. Mr Mister unit



Fig 4. Eyeglasses

Hints and tips

- Do not leave a machine switched on unattended
- Do not move the machine whilst it is in operation
- Always remove the transport plug before working with the machine
- Ensure that the unit is operated at least 4 metres away from other ventilated equipment
- Do not forget to replace the transport plug before moving unit
- Fog can activate smoke detectors
- Do not drink the fog fluid or apply externally!! Store safely to prevent any misuse by children. If you come into contact with fluid (eyes or skin) wash off the substance with running water, if necessary contact a doctor
- Spilled fluid may cause the floor to be slippery; spilled fog-fluid should be picked up by a liquid-binding material, then disposed of properly.



Fig 5. Mr Pressure unit



Fig 6. Condensation glass



Fig 7. Haze production

Alternative unit

Occasionally, depending on hire stock, you may receive an alternative system to the one pictured above. If that is the case please follow all instructions above but with the following differences;

- Lift the hatch (fig.8)
- Completely remove the red output lid (fig.9) (recommended) or turn the lid to reveal small holes which allow a reduced output
- Check fluid level by looking through the hole (fig.10)
- The on/off switch is located on the back of the unit

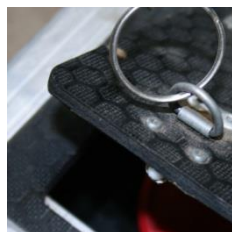


Fig 8. Hatch



Fig 9. Lid

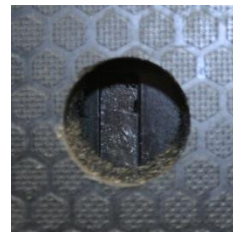


Fig 10. Level indicator