



Technical Datasheet

Water Mist Tornado

Specifications:

Height: 230cm

Width: 54cm

Depth: 60cm

Weight: 70kg approx

Suggested for set up:
2 persons

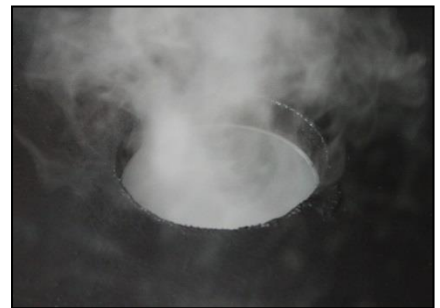
Additional information:

- Ideal for permanent installation
- Fragile

The Water Mist Tornado is a visual effect which produces a swirling, smoke-like vortex of water mist inside a perspex case. Ideal for permanent installation in science museums and exhibitions but also suitable for hire at many other events.

The Water Mist Tornado is currently unavailable for dry-hire.

It can either be hired along with an MTFX Technician to operate it or permanently installed at your venue. Please contact us for prices and further info.



vimeo.com/72417173



Velt House, Velt House Lane, Elmore, Gloucester, GL2 3NY
T: 01452 729903 E: info@mtfx.com www.mtfx.com